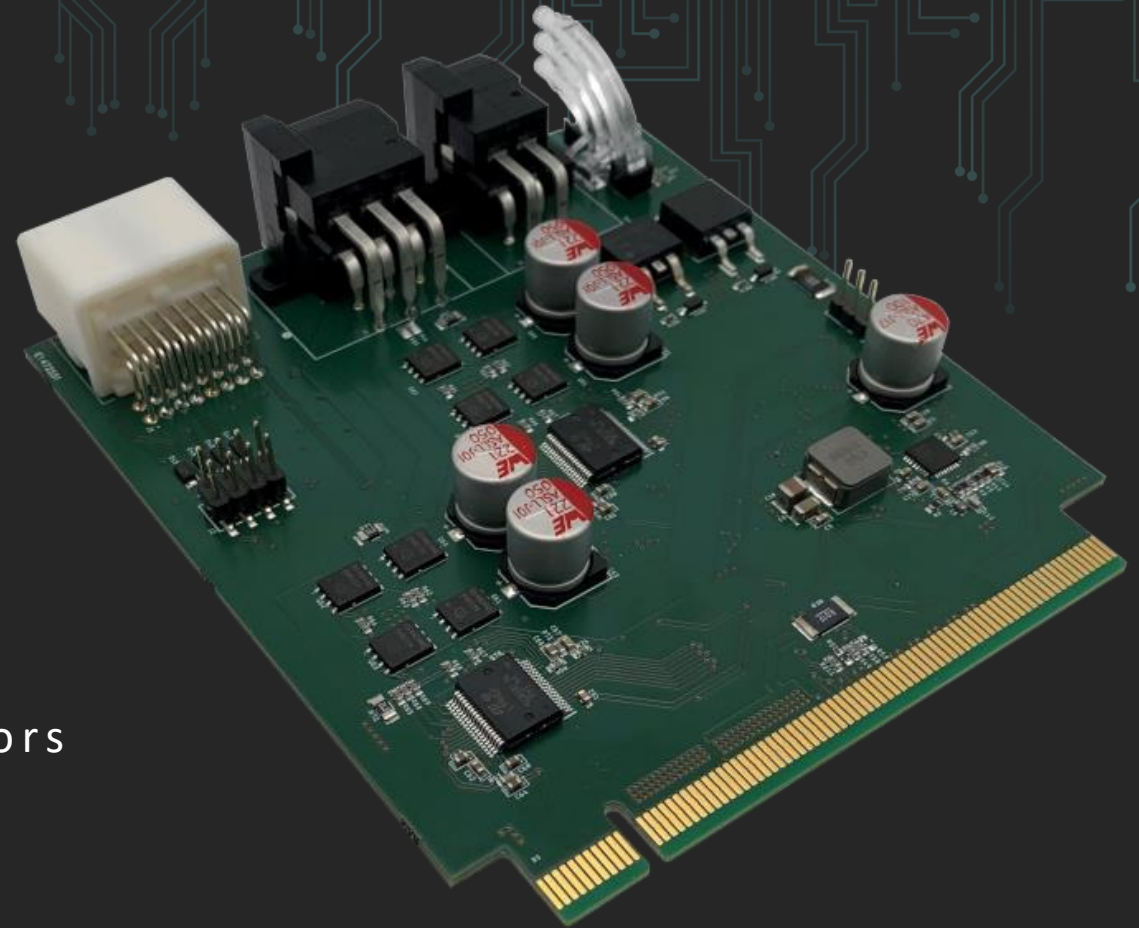


INNOVATIVE ELECTRONICS ENGINEERING



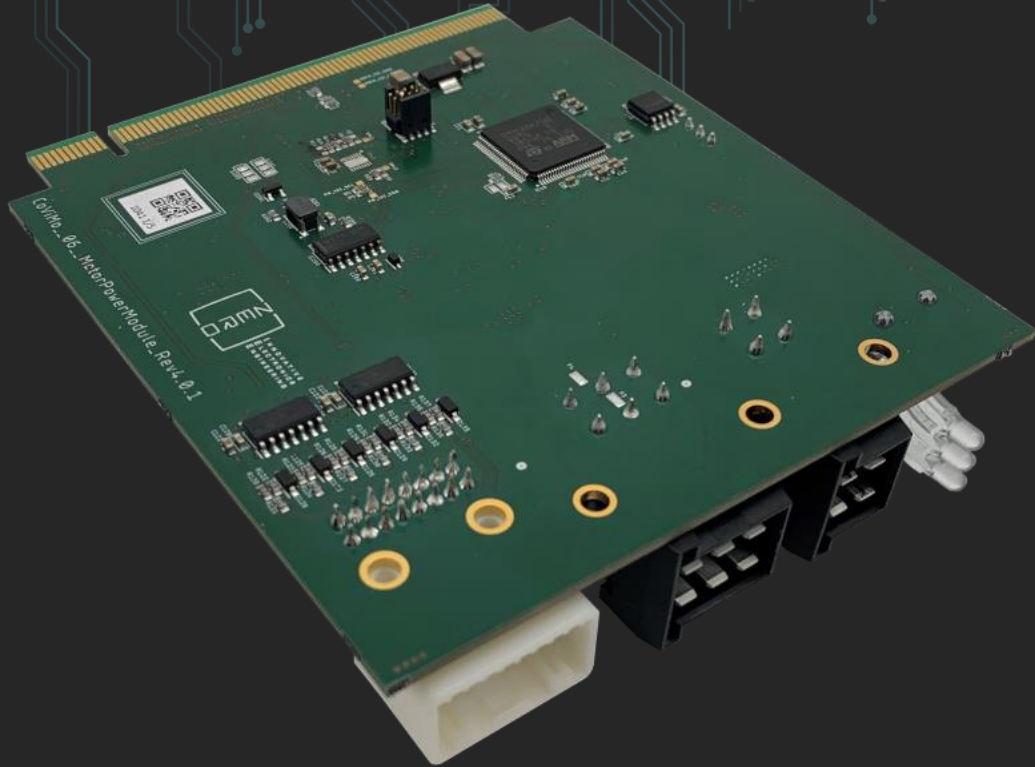
ZERO

Motor Node

Dual-Channel Driver For DC Motors

MAKE IT MOVE





WIDE RANGE INPUT VOLTAGE [9-30V]

3x STATUS LED

1x CAN-FD

AUTOMOTIVE-GRADE CONNECTOR

2x H-BRIDGE [15A per CHANNEL]

CURRENT MEASUREMENT

4x DIGITAL INPUT

2x ANALOG INPUT

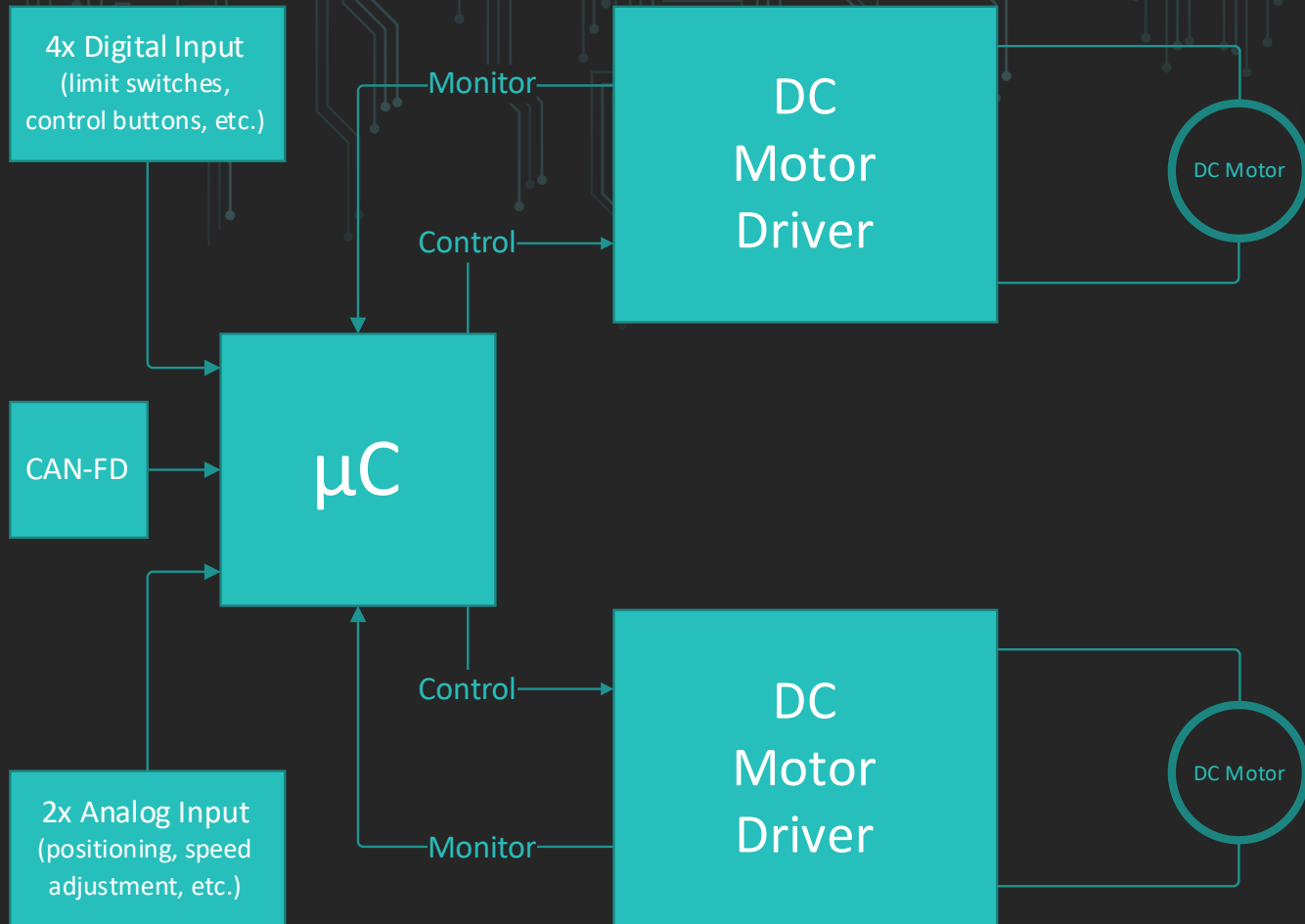
ZERO

Motor Node

Dual-Channel Driver For DC Motors



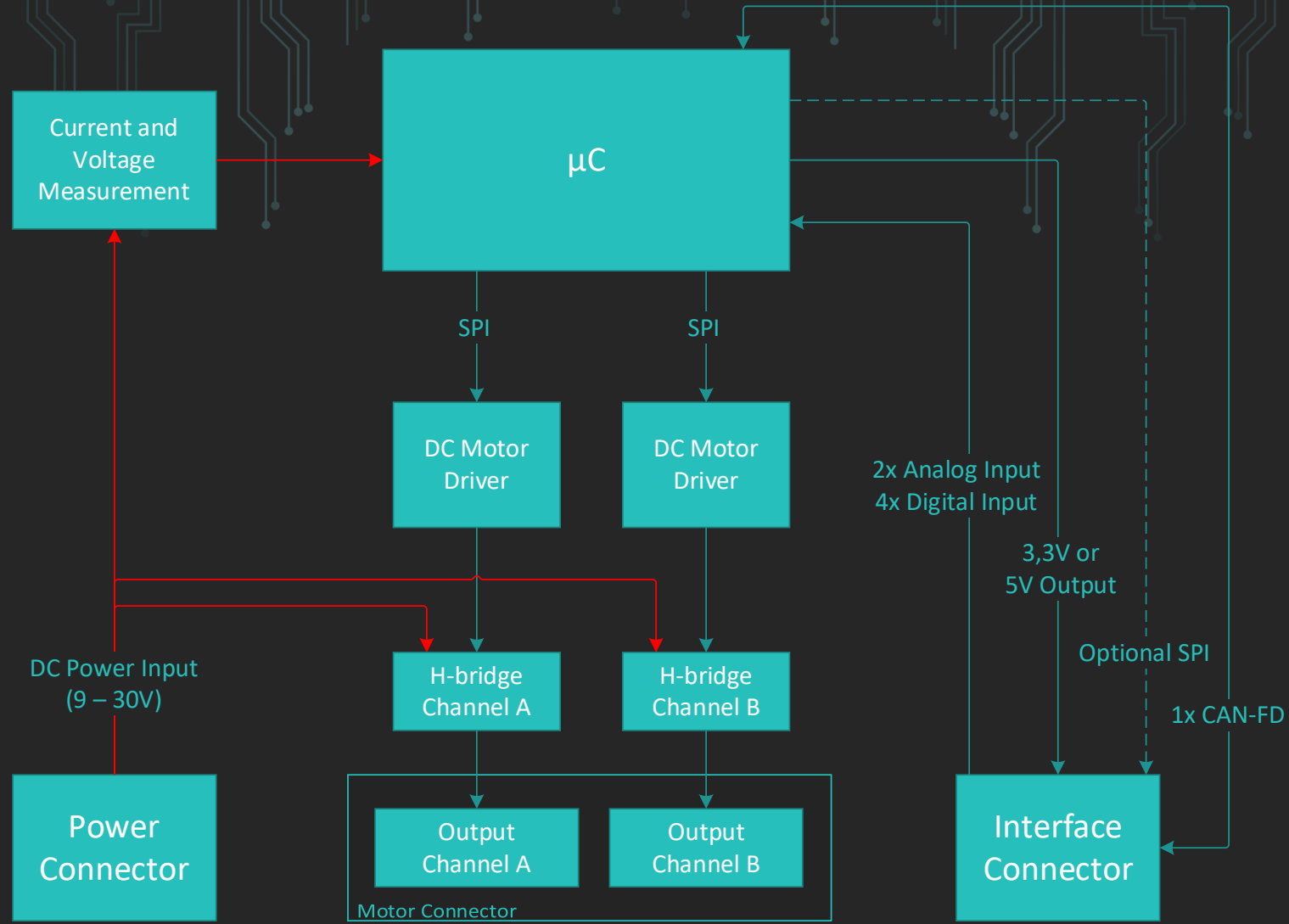
Motor Node Use Cases



- Use digital inputs for control or limitation purposes
- Use analog inputs for any travel sensors or speed adjustments
- Set your own current limits
- Set up your own window regulators, incl. over current shutdowns and lifter switches
- Adjust any axes of your seat in a way that suits you
- Test your DC motors in endurance tests where you determine all parameters yourself
- ... and many more!



Motor Node Block Diagram

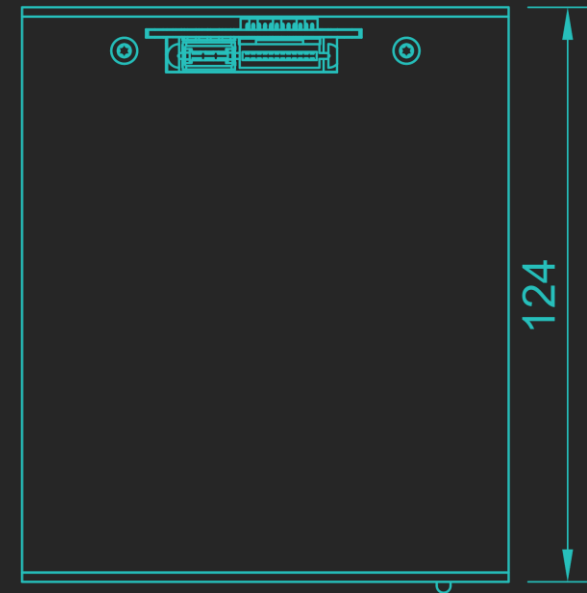
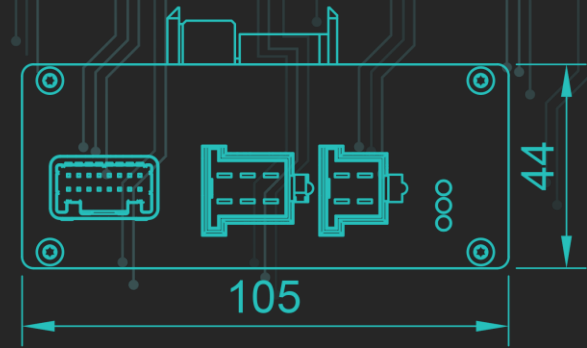
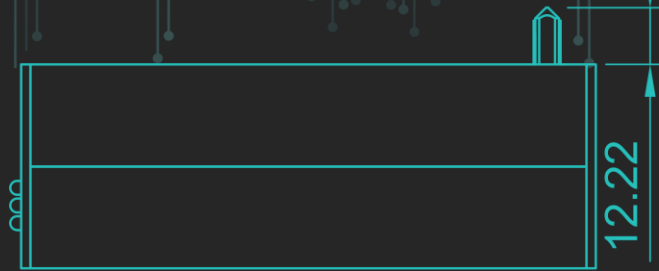
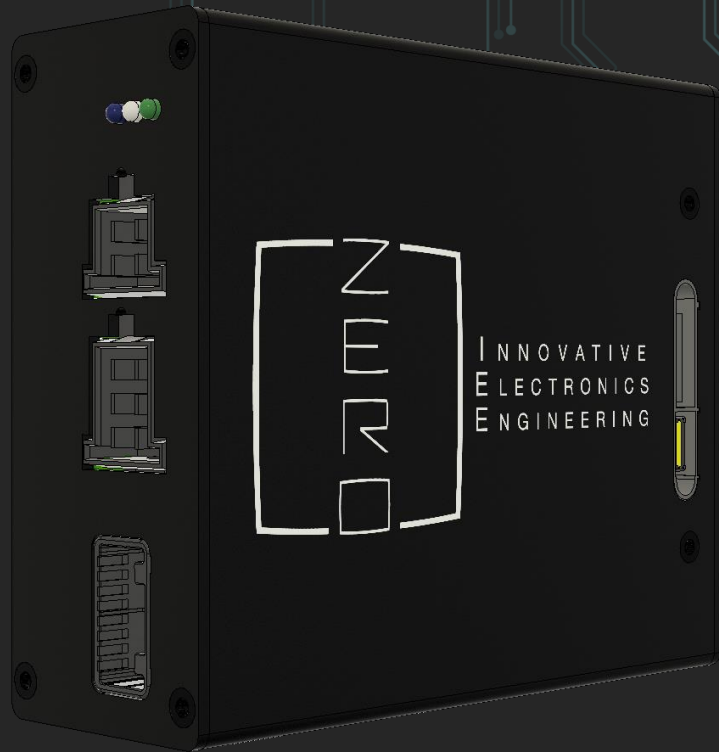


Motor Node Datasheet

<p>Interfaces</p>	<ul style="list-style-type: none"> ▪ 1x CAN-FD ▪ 4x Digital Input ▪ 2x Analog Input ▪ 1x SPI (optional) ▪ 3,3V or 5V Output
<p>DC Motor Drivers</p>	<ul style="list-style-type: none"> ▪ 2x H-Bridge ▪ Voltage: 9...30V ▪ Current Output per channel (continuous): 15A ▪ Current Output per channel (maximum): 30A for 5 seconds.
<p>Dimension</p>	<ul style="list-style-type: none"> ▪ 124 x 105 x 44 mm (w x d x h)
<p>Weight</p>	<ul style="list-style-type: none"> ▪ 484g
<p>Electrical Specification</p>	<ul style="list-style-type: none"> ▪ input voltage: 9 – 30V DC ▪ power consumption idle: 119mA @ 12V DC
<p>Other</p>	<ul style="list-style-type: none"> ▪ Mounting: DIN rail (TH35) and screw straps ▪ Updates <ul style="list-style-type: none"> ▪ the Motor Node can be updated by the user ▪ updates are installed via CAN / openBLT



Motor Node Drawings





INNOVATIVE
ELECTRONICS
ENGINEERING

Thank you for your interest in our AMPS Motor Node! For further information go to our website or contact our team.

Dr. Frank Lehmann
Product Manager
frank.lehmann@zero-ieee.com
+49 160 9896 5785

Sebastian Zech
Co-Founder & CEO
sebastian.zech@zero-ieee.com
+49 176 23423211