

INNOVATIVE ELECTRONICS ENGINEERING



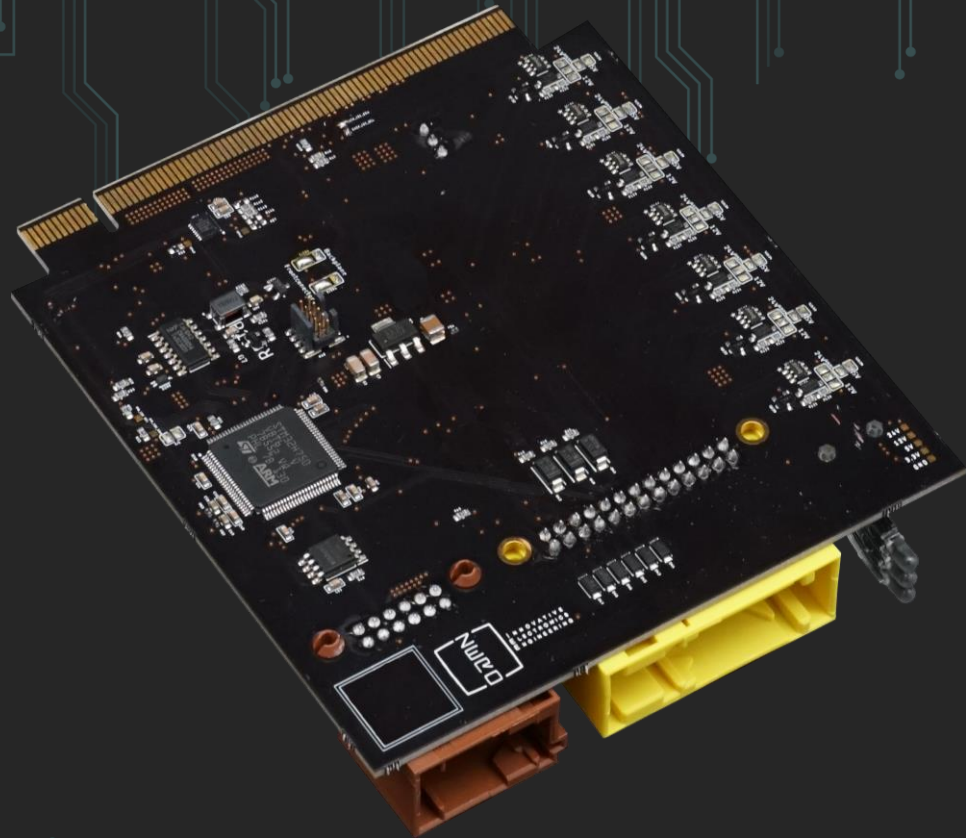
ZERO

LIGHT NODE

7-Channel PWM

ILLUMINATE EVERYTHING





WIDE RANGE INPUT VOLTAGE [9-55V]

3x STATUS LED

1x CAN FD

AUTOMOTIVE-GRADE CONNECTOR

7x HIGH-SIDE PWM OUTPUT

[5V / 12V / 24V selectable]

3x DIGITAL OUTPUT [for LED STRIPS]

3x DIGITAL INPUT

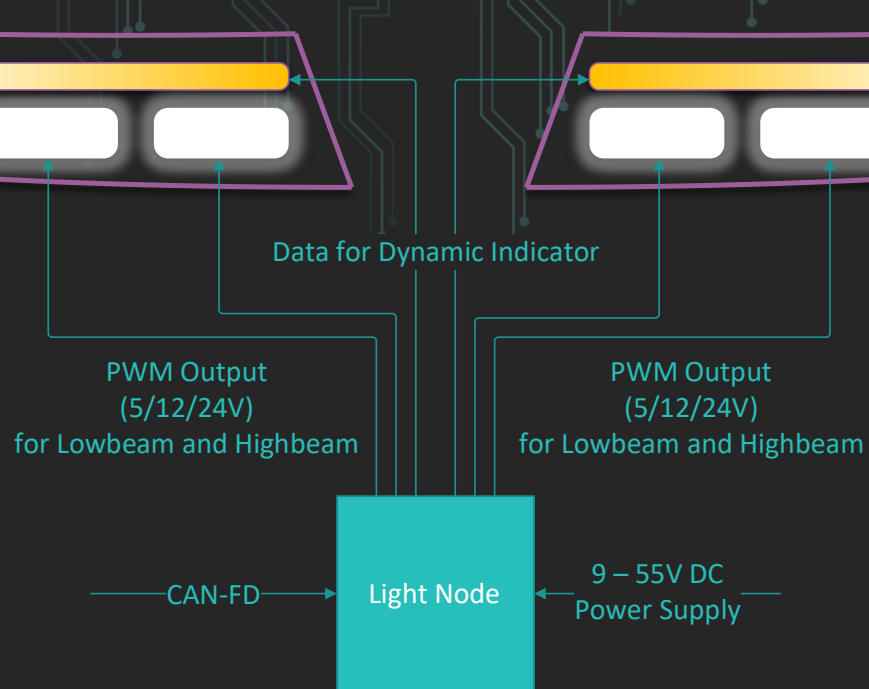
ZERO

LIGHT NODE

7-Channel PWM

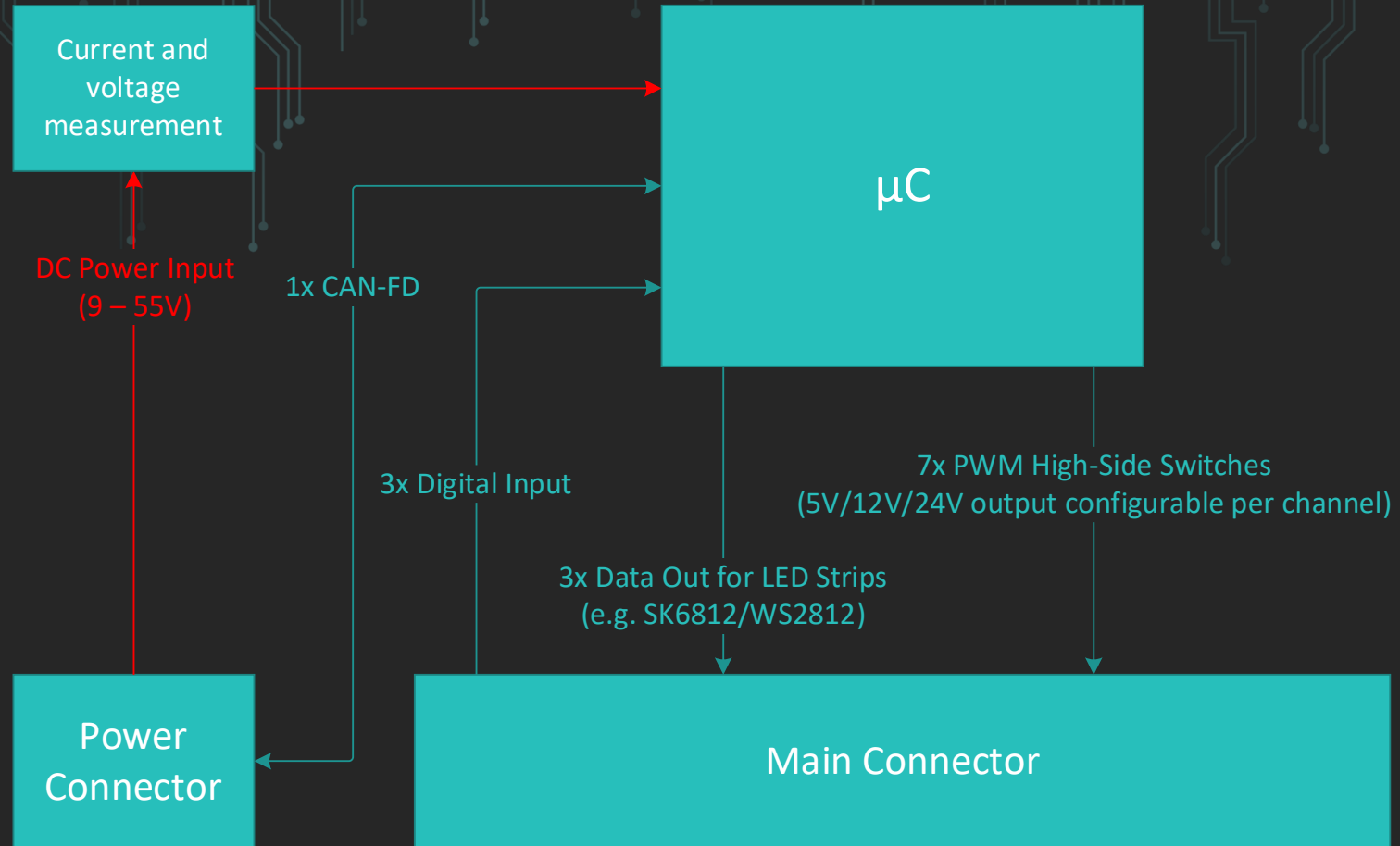


Light Node Use Cases



- Control various lighting elements
 - RGB(W) LED strips
 - 5V / 12V / 24V LED elements
- Ambient lighting
- Head and rear lamps
- Indicators
- Set up animations (e.g. dynamic indicator or fading/moving ambient lights)
- Animation synchronization
- Add our DMX-2-CAN converter to easily find your perfect lighting scenario
- ... and many more!

Light Node Block Diagram

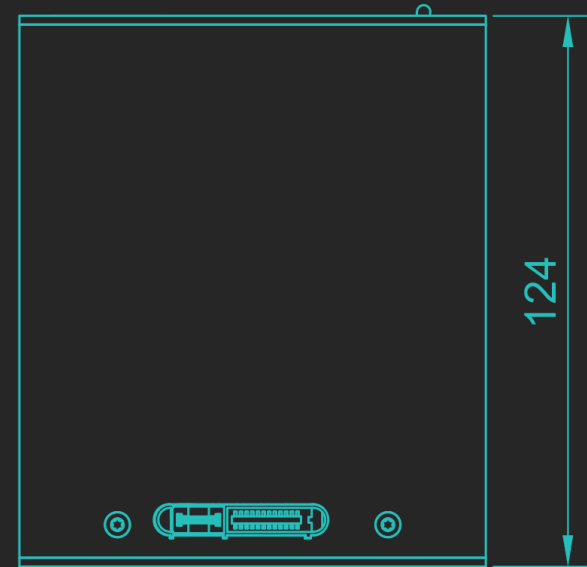
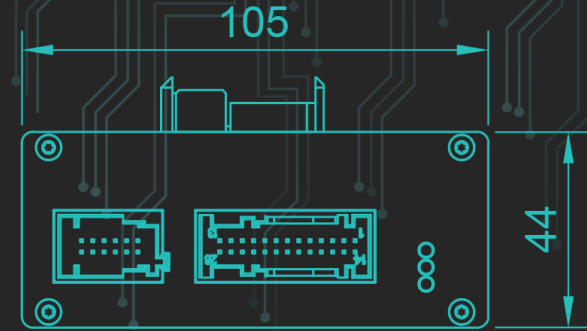
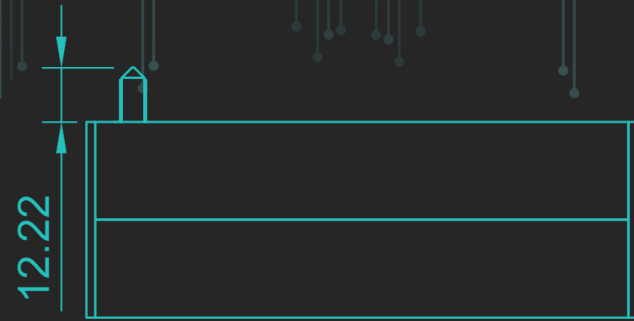
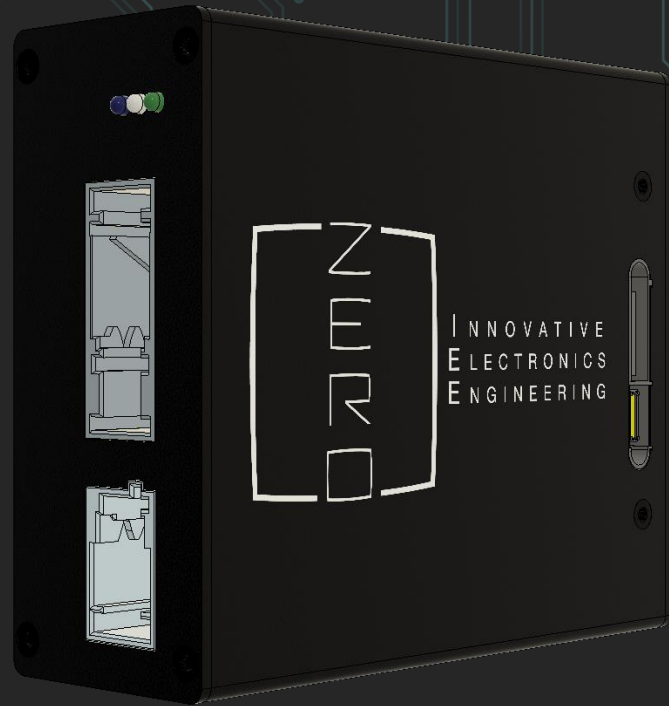


Light Node Datasheet

Interfaces	<ul style="list-style-type: none"> ▪ Automotive-grade connectors at the front <ul style="list-style-type: none"> ▪ 1x CAN-FD ▪ 7x High-Side PWM Output ▪ 3x Digital Input ▪ 3x Digital Output (for LED strips)
Features	<ul style="list-style-type: none"> ▪ RGB(W) LED strips ▪ Single color LED elements <ul style="list-style-type: none"> ▪ 5V / 4,0A ▪ 12V / 6,5A ▪ 24V / 4,0A
Dimension	<ul style="list-style-type: none"> ▪ 124 x 105 x 44 mm (w x d x h)
Weight	<ul style="list-style-type: none"> ▪ 571g
Power	<ul style="list-style-type: none"> ▪ Input voltage: 9 - 55V DC ▪ Idle power consumption: 118 mA @ 12V DC (1,42W)
Other	<ul style="list-style-type: none"> ▪ Mounting: DIN rail (TH35) and screw straps ▪ Updates <ul style="list-style-type: none"> ▪ The Light Node can be updated by the user ▪ Updates are installed via CAN / openBLT ▪ LEDs <ul style="list-style-type: none"> ▪ 1x power indicator ▪ 1x status ▪ 1x user programmable
Add-Ons	<ul style="list-style-type: none"> ▪ DMX interface



Light Node Drawing





INNOVATIVE
ELECTRONICS
ENGINEERING

Thank you for your interest in the AMPS Light Node! For further information, please visit our website or contact us.

Dr. Frank Lehmann
Product Manager
frank.lehmann@zero-ieee.com
+49 160 9896 5785

Sebastian Zech
Co-Founder & CEO
sebastian.zech@zero-ieee.com
+49 176 23423211